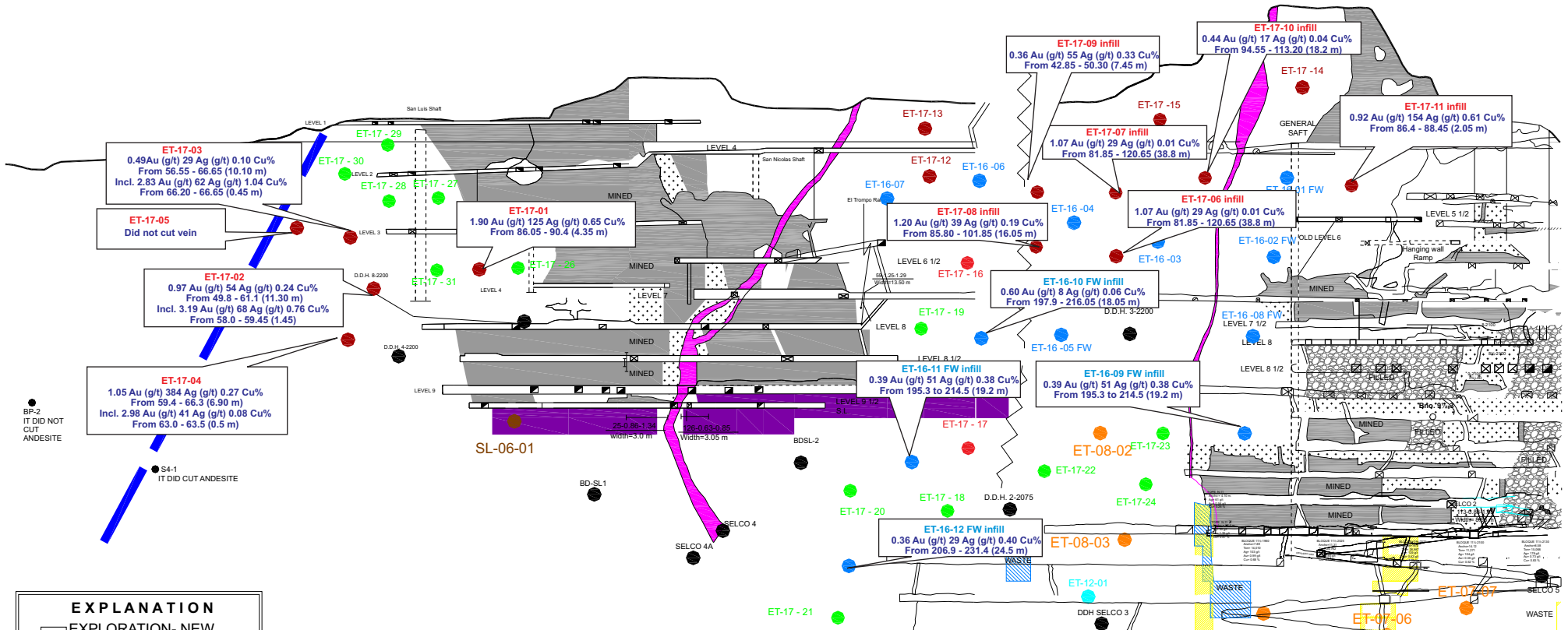




April 25, 2017

Avino Silver & Gold Mines Announces Further Results from its Current Exploration Drill Programs
 (Between the San Luis Workings and Elena Tolosa Workings, and to the west of San Luis) at the Avino Mine
 Long Section 2 - Area of Drilling



| EXPLANATION | |
|-------------|--------------------------------|
| | EXPLORATION- NEW DEVELOPMENTS |
| | Mine Pillars |
| | Ore Mined out |
| | Regional fault |
| | Rhyolitic Dyke |
| | Diamond holes prior to 2006 |
| | Diamond Holes in 2006 |
| | Diamond Holes in 2007 - 8 |
| | Diamond Holes in 2012 |
| | Diamond Holes in 2016 |
| | Diamond Holes in 2017 |
| | Planned Diamond Holes in 2017 |
| | Old Mine Pillars/Partial Mined |

AV = Avino Vein
 FW = Footwall
 S = Stockwork
 HW = Hanging Wall
 HWB = Hanging Wall Breccia